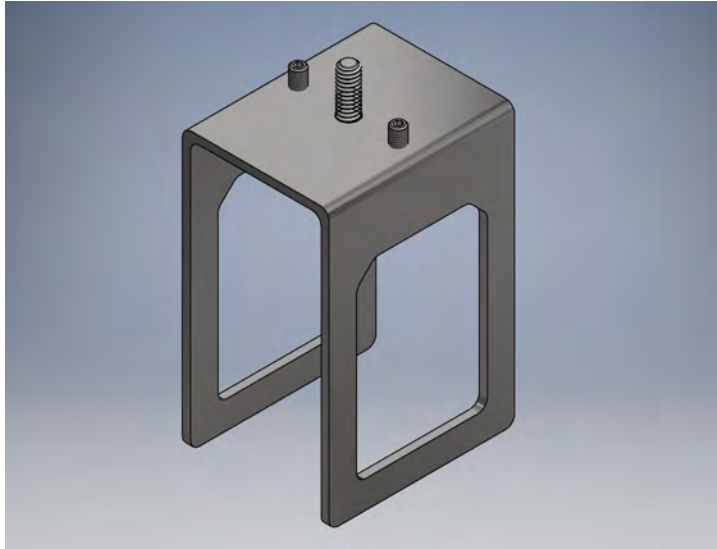
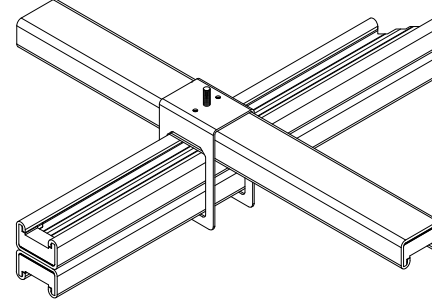


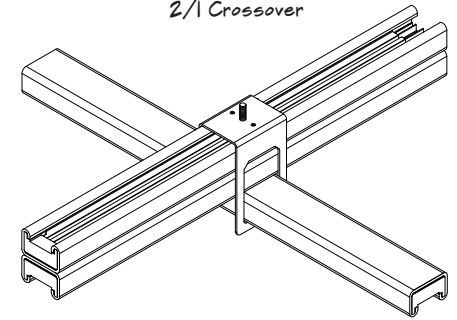
DOUBLE HEIGHT CROSSOVER  
for use as L, T, X



1/2 Crossover



2/1 Crossover

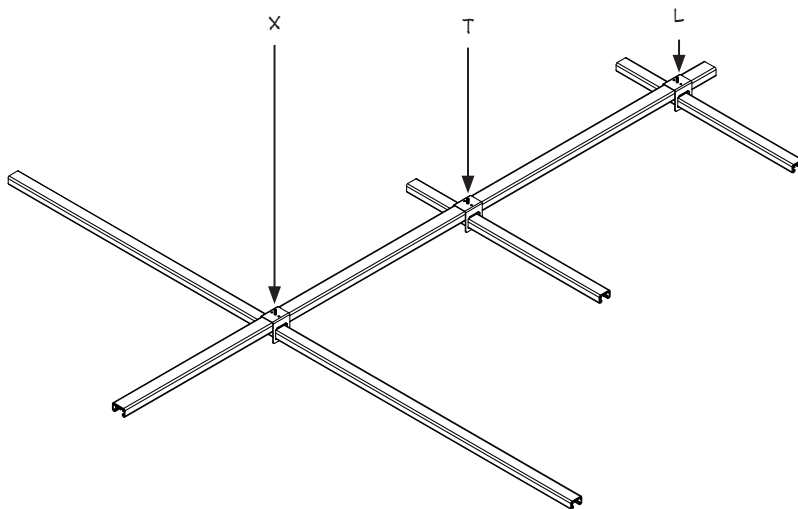


busSTRUT (double-deck)

Product	Length	Catalog Number
1/2 - 2/1	Double Single	ICD-S-(B)-ST-X

Finish - G=Galvanized W=White B=Black

**ONE over TWO** and **TWO over ONE** crossovers are for use with three busSTRUT lengths. Each crossover is a single unit for building L, T, X crossover grid configurations. The slimline crossover locks both busSTRUT lengths with set screws.



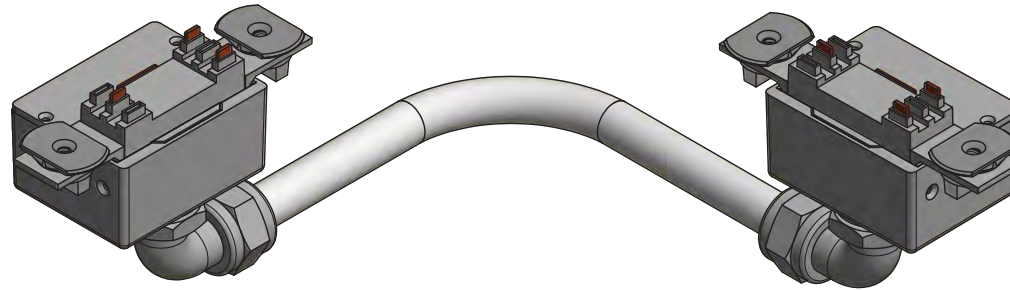
Crossovers provide the mechanical connection for building runs, rows, and grids. One universal crossover serves as an X, T, or an L intercept. The ONE over TWO and TWO over ONE crossovers are used when one double-deck length of busSTRUT intersects a single-deck length of busSTRUT, or vice versa.

UNIVERSAL JUMPER (40/20A)

Product	Amperage	Voltage	Length	Catalog Number
JUMPER	40/20	UNIVERSAL 120/277	12"	MD4020-UNIV-JC-(F)-00-12-X

Finish (F): G=Grey B=Black W=White

UNIVERSAL Jumpers are for use with both busSTRUT/20 and busSTRUT/40. The Jumper connects power to intersecting lengths of busSTRUT. Jumpers are fused on both leads. As a result, can connect 40A lengths to 20A lengths.

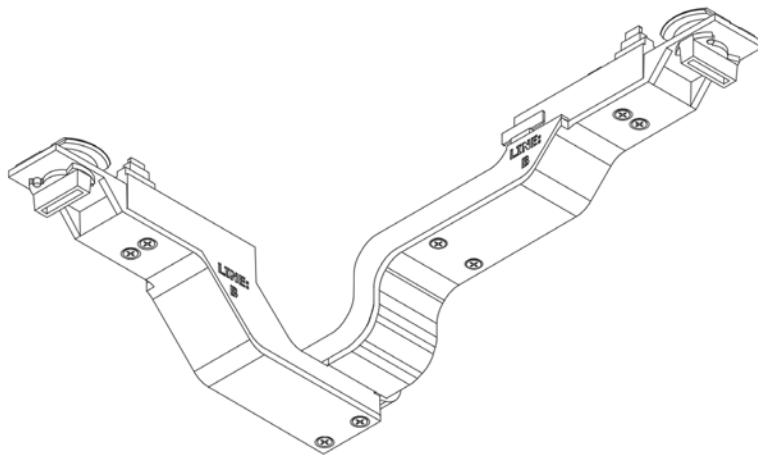


Jumpers provide a three pole electrical connection for building X,T,L configurations. One Jumper powers intersecting lengths of busSTRUT.

SLIMLINE JUMPER (20A)			
Product	Amperage	Voltage	Catalog Number
JUMPER	20	120	MD2020-UNIV-IJ-W-X

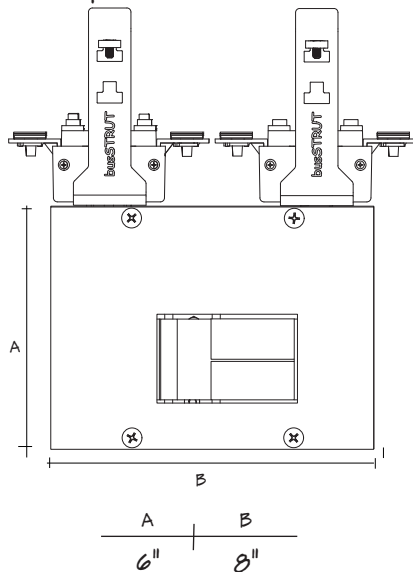
Finish (F): B=Black

The Slim Line Jumpers are for use with busSTRUT/20 . The Jumper connects power to intersecting lengths of busSTRUT.



Jumpers provide a three pole electrical connection for building X,T,L configurations. One Jumper powers intersecting lengths of busSTRUT.

**CUBE FUSES**  
 (2P) two circuits  
 up to 20 Amps (20A x 2 = 40A)

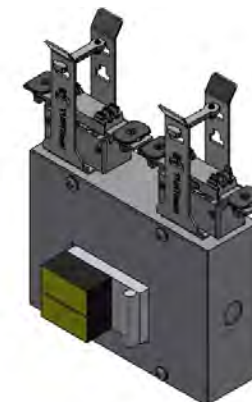


busSTRUT (single and double-deck)			
Product	Voltage	Amp	Catalog Number
LINE-FEED (FUSED)	UNIVERSAL 120/277	Custom	P20-3-40-UNIV-TCF-(F)-(C)

Finish - G=Galvanized W=White B=Black  
 Option Code - Custom Amperages Available

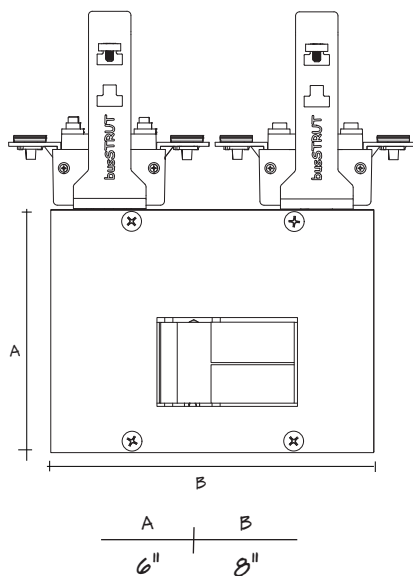
**Indicating CUBEFuse**

TCF6	TCF20
TCF10	TCF30
TCF15	TCF35
TCF17-1/2	TCF40



CUBE Fused line-feed (up to 20 Amps) can be positioned anywhere on busSTRUT to reduce the length of homeruns. Features a 3 Pole Fiter that powers up to two 20A circuits; 40A max. Available in galvanized, powder coated white and black. Universal 120/277V. Mounts to both single and double-deck busSTRUT/20. Factory installed Fuse Holders.

**CUBE FUSES**  
 (2P) two circuits  
 up to 40 Amps (40A x 2 = 80A)

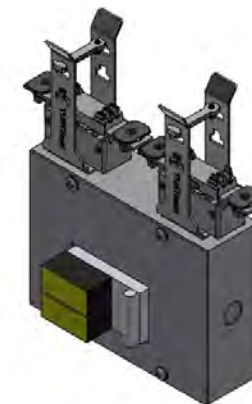


busSTRUT (single and double-deck)			
Product	Voltage	Amp	Catalog Number
LINE-FEED (FUSED)	UNIVERSAL 120/277	Custom	P40-3-80-UNIV-TCF-(F)-(C)

Finish - G=Galvanized W=White B=Black  
 Option Code - Custom Amperages Available

**Indicating CUBEFuse**

TCF6	TCF20
TCF10	TCF30
TCF15	TCF35
TCF17-1/2	TCF40



CUBE Fused line-feed (up to 40 Amps) can be positioned anywhere on busSTRUT to reduce the length of homeruns. Features a pair of 3 Pole Fitters that power up to two 40A circuits; 80A max. Available in galvanized, powder coated white and black. Universal 120/277V. Mounts to both single and double-deck busSTRUT/40. Factory installed Fuse Holders.